

Use Print Inspection, to minimize waste, improve production efficiency and save costs



TECHNICAL SEMINAR 23-25 NOVEMBER 2022
InterContinental Barcelona



Have you checked your waste bin lately?

Guy Yogev
November 2022



1

What do hear from the market?



2



Customers are telling us that...

- *“The packaging & label markets are still strong & growing”*
- *“our incoming orders are still doing well”*
- *“We are working at high capacity”*

ESKO*

3

And you're concerned with...

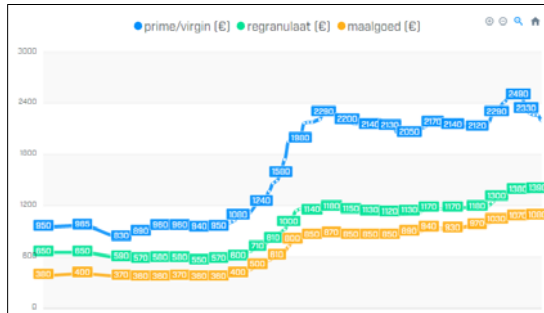
- Soaring energy and material cost
- Supply chain disruption
- Rising inflation
- Lack of skilled labor
- Volatile planning and reduced efficiency, leading to costly reprints and high material waste
- Environmental sustainability



4

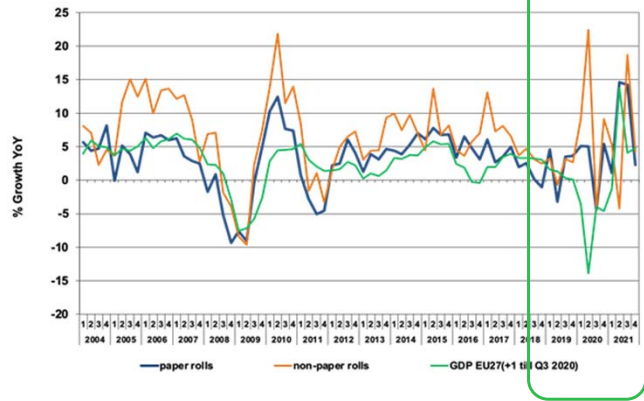
Raw material prices are surging

LDPE Film



27- DEC-19: €950
 29-APR-22: peak at €2,490
 Today: €2,200] x 2.3

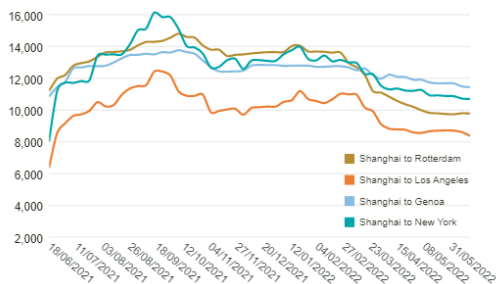
Label materials



Source: <https://www.vraagenaanbod.nl/thema/markttrends/>

Cost of sea transportation causes disruption in globalized market and drives inflation.

Trade Routes from Shanghai (US\$/40ft)



The recovery in world trade that started faster than expected in mid-2020 created a capacity shortage in maritime transport.

As a result, sea container prices rose phenomenally: from **\$2,000** (€1,700) each in November 2020, to more than **\$16,000** in September 2021. Today (June 2022), the composite index decreased by 1%, but remains 8% higher than a year ago at **\$10,695** for a 40ft container going from Shanghai to New York.



Source: <https://www.drewry.co.uk/supply-chain-advisors/supply-chain-expertise/world-container-index-assessed-by-drewry>

Can we predict the future?



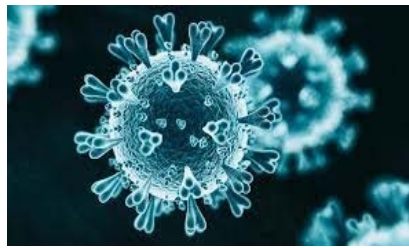
Supply chain disruption



War and economic uncertainty



Logistics and inventory



Covid19 & changing world of work

ESKO*

7

Bottom line:

The future will never be the same again, and our industry will have to adapt to a different future and different way of working.

ESKO*

8

How can we Minimize Waste, Improve Efficiency and Save Costs - with Print Inspection?

ESKO*

9

What are the main challenges printers and converters are facing?

- Shorter runs, many jobs per day with **job changeover challenges**
- **Less skilled and trained operators**
- **Material costs** went up and availability is challenging
- Too much **material is wasted** in both makeready and run-time. **Need more control** over the process
- **Need to improved efficiency, and time-to-market (OTD)**
- **Re-prints are very costly** and needs to be reduced or eliminated
- **Brand requires best quality, and we cannot risk losing customers** due to quality issues


10

How can we assist you in resolving current issues?



- Perform **faster job change** with minimal waste
- Get all data from pre-press to enable **inspection automation**
- Ensure the **correct job is printed (avoid mistakes and re-prints)**
- Alert immediately and **reduce waste and time**
- Identify **repeating/ process issues & their source**
- Ensure printing enough good material **to avoid re-prints**
- Deliver **excellent quality, every time, and assure no bad material leaves the floor**

11



Let's get practical and see how it is done...

12

We will need 100%
print inspection
system on press
as a starting point...



Turbo HD 100% Inspection



13

How can we assist
you in resolving
these issues?



- Perform **faster job change** with minimal waste
- Get all data from pre-press to enable **inspection automation**
- Ensure the **correct job is printed**
- Alert immediately and **reduce waste and time**
- Identify **repeating/ process issues & their source**
- Ensure printing enough good material to **avoid re-prints**
- Deliver **excellent quality, every time, and assure no bad material leaves the floor**

14

Faster makeready & Press Control (register, pressure, color)

- **The target** – to reduce makeready time and waste with automatic press setup
- **Manual register & pressure** – can take 10-20 min and 500-700meter of waste
- **Automatic register and pressure** – can take 2-3min and up to 100 -150m of waste
- **The result** - reduction of hundreds of meters, valuable time and expertise
- **Color make ready** can be done faster **with inline Spectral color measurements**



ESKO*

15

How can we assist you in resolving these issues?



- Perform **faster job change** with minimal waste
- Get all data from pre-press to enable **inspection automation**
- Ensure the **correct job is printed**
- Alert immediately and **reduce waste and time**
- Identify **repeating/ process issues & their source**
- Ensure printing enough good material to **avoid re-prints**
- Deliver **excellent quality, every time, and assure no bad material leaves the floor**

16

AutoSet – connecting pre-press to inspection on press

Automation Engine

Gateway computer

AutoSet

AVT inline

Out of the box connectivity
A touchless workflow for auto inspection setup from prepress to production
No extra labor

Job meta data:
Job dimensions, PDF file for Auto jobs ref

PDF content related data:
die line, text, barcode area identification
Auto support for multi-design jobs
Region of interest & iDeal points marked by Esko plug in for illustrator (provided with Autoset)

Saves 3-4 per each job
Ensures higher quality control
Eliminates human errors
Starting inspection automatically
Can Inspect from 1st copy

ESKO

17

Manual Inspection setup (without automation):

Operator

Operator

Operator tasks to setup jobs for inspection:

1. Job ID should be set
2. Job dimension should be specified
3. PDF file manually uploaded to the inspection system (for Jobref)
4. Text elements marked manually
5. Barcodes elements marked manually
6. Inspection limits (die line) marked manually
7. Region of interests marked manually
8. Select iDeal points
9. Quality thresholds

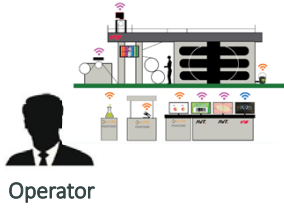
Operator

Without automation –
Inspection setup is a manual process
Takes few minutes before every print run
Hard to control (per operator...)

ESKO

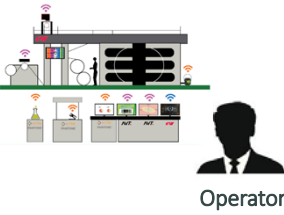
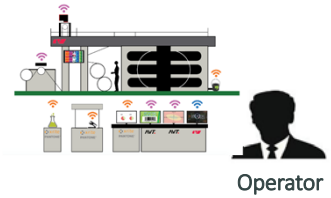
18

Inspection setup with AutoSet automation:



Operator tasks to setup jobs for inspection:

1. Job ID should be set
2. Job dimension should be specified
3. PDF file manually uploaded to the inspection system (for Jobref)
4. Text elements marked manually
5. Barcodes elements marked manually
6. Inspection limits (die line) marked manually
7. Region of interests marked manually
8. iDeal color points
9. Quality thresholds

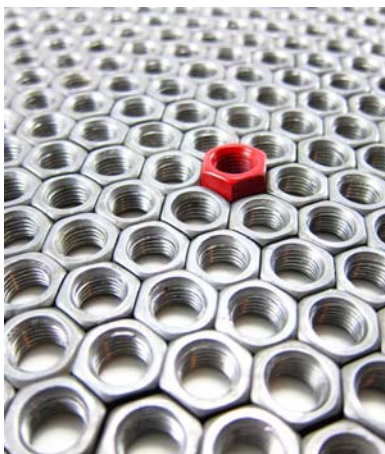


Save 3-4 min before print
 Ensure high quality results
 Eliminate human errors
 Starts inspecting from 1st meter!



A single point of truth for quality management

Standardization



Accuracy



Automation



How can we assist you in resolving these issues?



- Perform **faster job change** with minimal waste
- Get all data from pre-press to enable **inspection automation**
- Ensure the **correct job is printed**
- Alert immediately and **reduce waste and time**
- Identify **repeating/ process issues & their source**
- Ensure printing enough good material to **avoid re-prints**
- Deliver **excellent quality, every time, and assure no bad material leaves the floor**

21

Job Verification



- **AVT inline verification tools**
- **Main benefits** – making sure the right job is printed, saving costly mistakes (wrong or defective plates, wrong revisions, languages)
 - **JobRef** – online Job verification to PDF
 - → supports comparison of single package PDF to all packages in the repeat
 - → supports “multi designs” jobs



22

How can we assist you in resolving these issues?



- Perform **faster job change** with minimal waste
- Get all data from pre-press to enable **inspection automation**
- Ensure the **correct job is printed**
- Alert immediately and **reduce waste and time**
- Identify **repeating/ process issues & their source**
- Ensure printing enough good material to **avoid re-prints**
- Deliver **excellent quality, every time, and assure no bad material leaves the floor**

23

100 % Based Automatic Inspection – Earlier warning to reduce defect lifespan

- After a **short** set-up, the Inspection Platform **automatically** identifies **any** type of printing and production faults
- Marks & Classifies and display the detected defects on the screen
- Alerts Immediately – once a defect was detected by the inspection system



ESKO

24

Alerting on any evolving issue!

- Any Print defect
- Color monitoring
- Color register
- Varnish / Cold Seal problems
- Die cut & matrix removal
- Repeat length
- Barcode readability
- And more...



25

How can we assist you in resolving these issues?



- Perform **faster job change** with minimal waste
- Get all data from pre-press to enable **inspection automation**
- Ensure the **correct job is printed**
- Alert immediately and **reduce waste and time**
- Identify **repeating/ process issues & their source**
- Ensure printing enough good material to **avoid re-prints**
- Deliver **excellent quality, every time**, and assure no bad material leaves the floor

26

Continuous and Random Defects Monitoring

A process control tool to help printers and converters focus on what really matters

- Differentiate between **repeating defects versus random defects**
- **Focus on the most relevant defects** in real time
- **Identify source of defect:** Plate defects, Anilox, CI Drum, etc.
- Enables **better decision making on roll quality** and waste removal



ESKO 

27

Inspection On AVT Demo Argus

Defect

New "random" defects threshold

Last Defect [00:00:03]

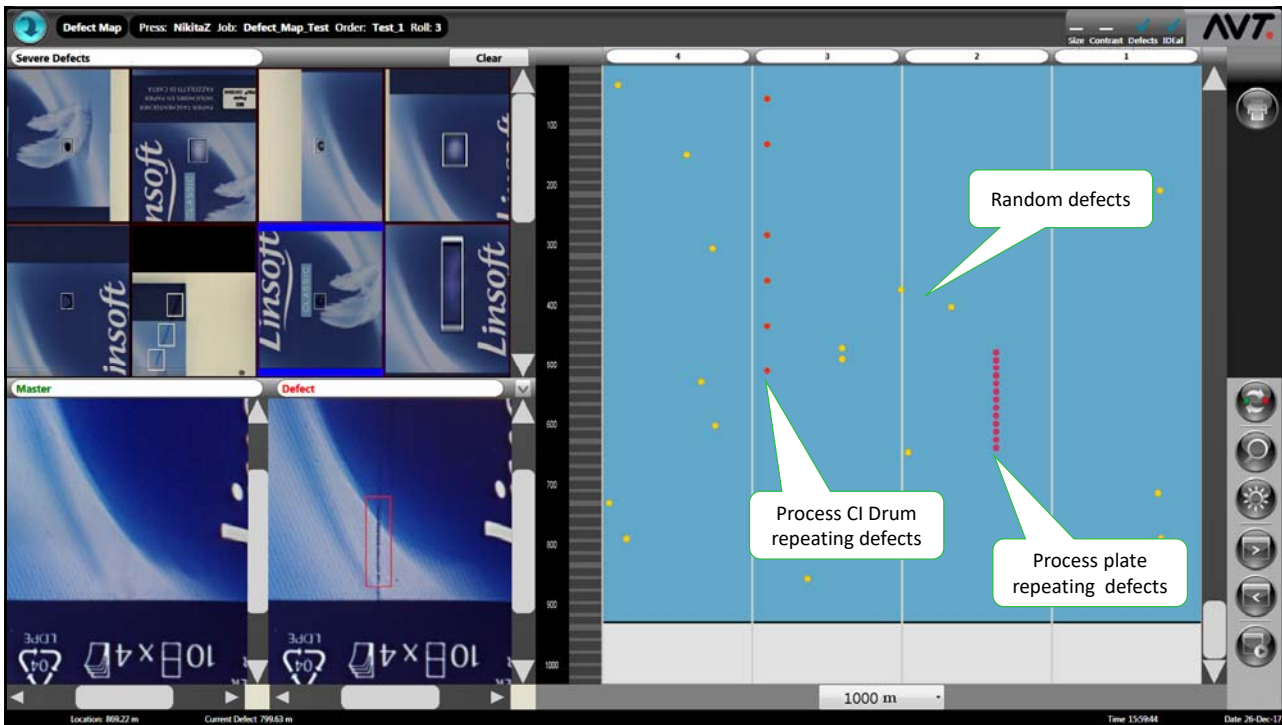
Defect [00:00:47]

Best in-class solutions for 100% quality assurance and process control

LOT AS0110 EXP 03/2017

Order ID: 123 Roll no.: 9 Speed: 52 [in/min] Meter Count: 371 Zoom: 40% Brs: 100% Profile: AVT Demo Argus

28



29

How can we assist you in resolving these issues?



- Perform **faster job change** with minimal waste
- Get all data from pre-press to enable **inspection automation**
- Ensure the **correct job is printed**
- Alert immediately and **reduce waste and time**
- Identify **repeating/ process issues & their source**
- Ensure printing enough good material **to avoid re-prints**
- Deliver **excellent quality, every time, and assure no bad material leaves the floor**

30

Good material monitoring

- Automatic counting of good material printed**, according to target substrate length or the number of packages, ensures that the correct amount is produced, and no reprints are needed due to higher-than-expected waste levels

Category	Value	Percentage
Target:	10000	<input checked="" type="checkbox"/> Apply
Good:	564	6.00 %
Not-inspected:	1150	12.00 %
Defective:	16	0.00 %
Sub-Total:	1714	18 %

Units: Label

ESKO*

31

How can we assist you in resolving these issues?



- Perform **faster job change** with minimal waste
- Get all data from pre-press to enable **inspection automation**
- Ensure the **correct job is printed**
- Alert immediately and **reduce waste and time**
- Identify **repeating/ process issues & their source**
- Ensure printing enough good material to **avoid re-prints**
- Deliver **excellent quality, every time, and assure no bad material leaves the floor**

32

100% inspection, reporting & waste removal workflows

1. ESKO AVT 100% Turbo HD inspection, with highest inspection abilities
2. Complete reporting on everything inspected, monitored and measured
3. Easy removal of defects downstream with WorkFlow Link



ESKO 

33

*What does it
practically mean
for you?*



Plastica (Romania) – “We were able to reduce production costs by 25%, increase productivity by 30%, and reduce preparation time for all jobs. We also have zero complains from our customers now”

AG3M (France) – “We increased productivity by about 30%. We reduced paper wastage, unnecessary re-prints, time and machine stops. In term of quality, 99% of defects are removed now prior to shipment”

34

Have you checked your waste bin lately?

BUSINESS COSTS ARE ALL CONTINUALLY INCREASING

RAW MATERIALS
LOGISTICS
ENERGY
LABOR

ARE YOUR WASTE BINS OVERFLOWING?

- Materials wasted during make-ready and job changeovers
- Entire jobs produced incorrectly and requiring re-print
- Unusable materials due to undetected print defects and color variations
- Partial reprints due to errors discovered after job completion

EVERY METER OF WASTED MATERIAL NOW COSTS YOU 20-40% MORE THAN TWO YEARS AGO!
Materials are a precious commodity - and it's important to waste as little as possible.

IT'S TIME TO MINIMIZE WASTE, IMPROVE EFFICIENCY, AND PROTECT YOUR BUSINESS CONTINUITY

- Enable fast job changeovers and minimize waste
- Always print the right job
- Reduce material and time wastage
- Identify repeated process issues
- Eliminate reprints and always print enough good material

THE BEST PRINT INSPECTION IS 100% AUTOMATIC INSPECTION
Inspect 100% of the printed web 100% of the time, by integrating print inspection technology in an end-to-end production workflow.

See how you can remove waste from your production process with 100% automatic inspection. ask.eko.com/ask/100aut

ESKO

It's Time for Your Questions!



ESKO

35

ESKO

Thank you

36